



North County Multimodal Strategy

San Mateo County Paratransit Coordinating Council

October 10, 2023



Agenda

- 1 Introduction
- 2 What is 101 Corridor Connect?
- 3 Multimodal Strategies
- 4 North County Multimodal Strategy
- 5 Next Steps/Q&A

Introduction



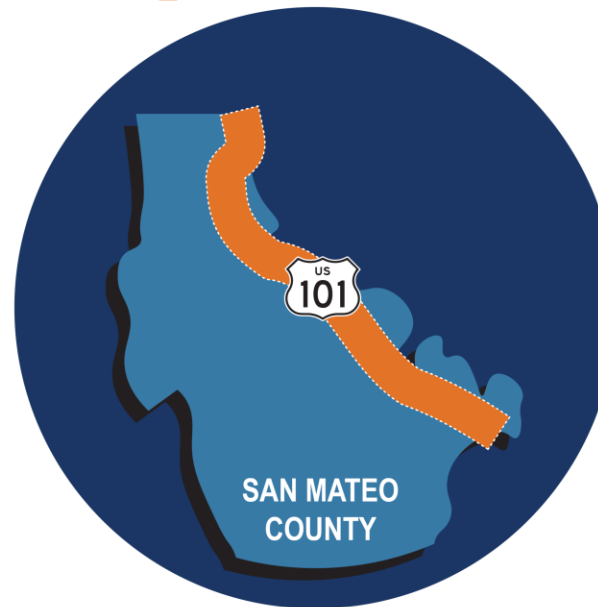
What is 101 Corridor Connect?

A collaborative program to identify, prioritize and deliver a package of congestion management projects along US 101 in San Mateo County.

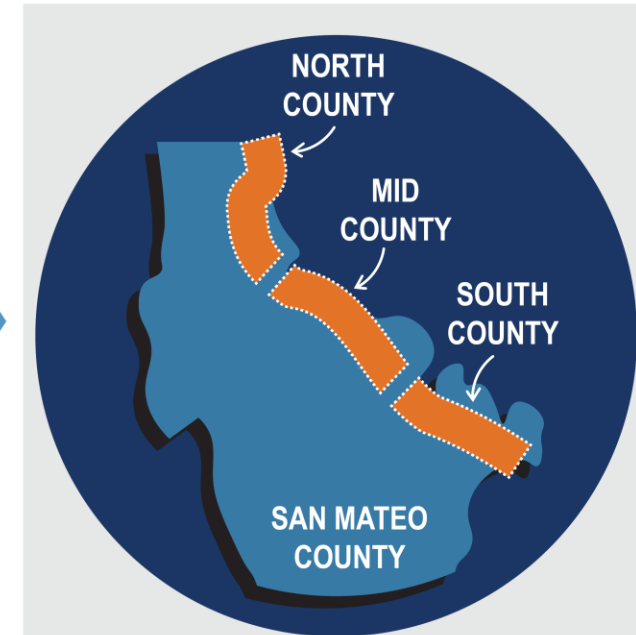
Looks beyond just highway infrastructure and considers the mobility needs of the corridor as a whole.

Program partners - C/CAG, Caltrans, cities, transit agencies, and San Mateo County.

US 101 South Comprehensive Multimodal Corridor Plan



INITIATIVES



Multimodal Strategies

+ OTHER FUTURE INITIATIVES

Using Caltrans' US 101 South Comprehensive Multimodal Corridor Plan as its foundation, 101 Corridor Connect will identify, prioritize and deliver locally-supported projects along US 101.

Goals of 101 Corridor Connect



Safe

Enhance safety for users of the transportation network.



Connected

Connect people to the places they need to go.



Sustainable

Improve air quality and reduce emissions.



Inclusive

Increase access for underserved communities.



Multimodal Strategies

North County, Mid County and South County

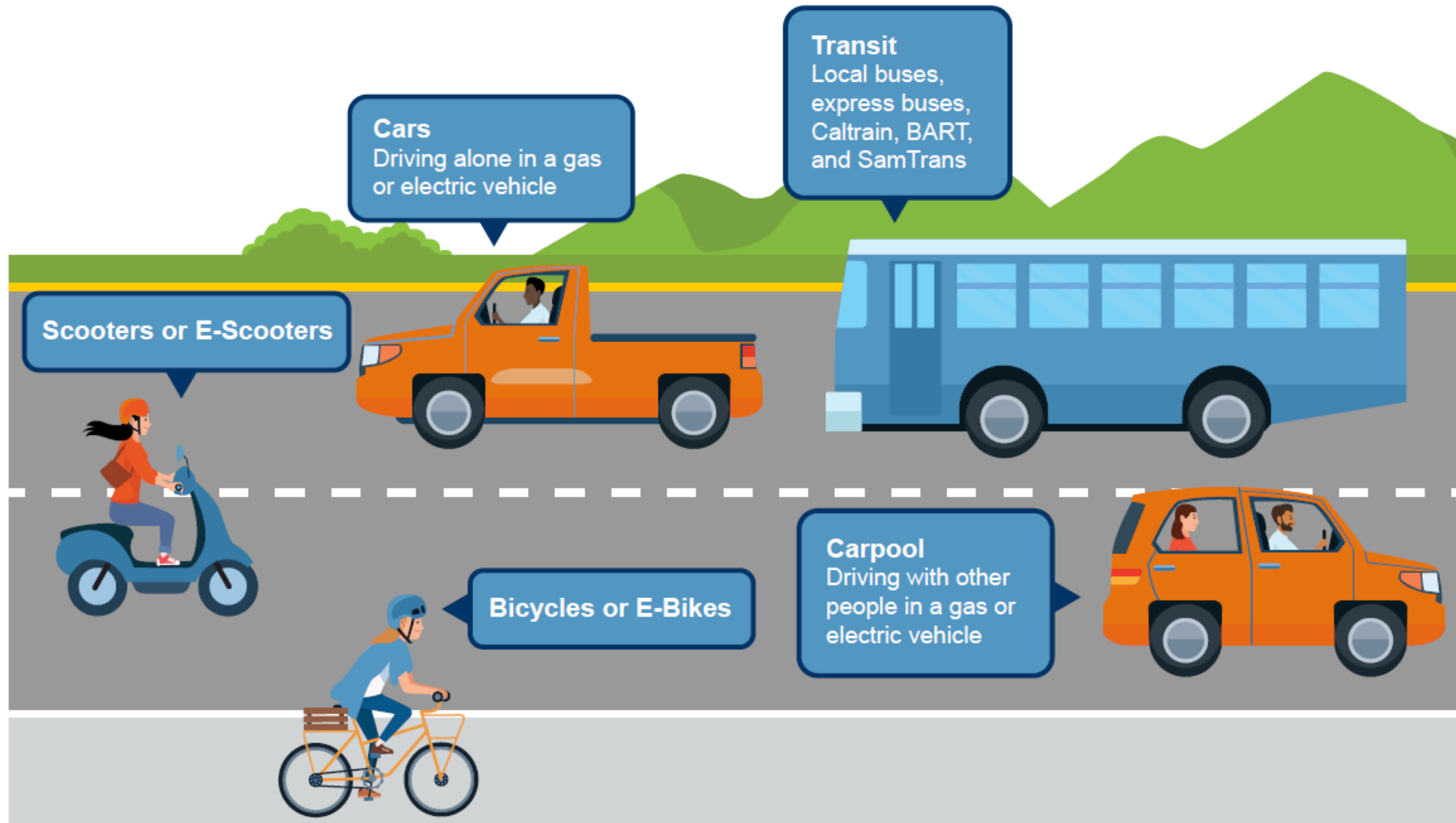
What is a Multimodal Strategy?

The Multimodal Strategies are planning documents that will identify and prioritize needed projects in San Mateo County.

Multimodal Strategies will be developed for the entire 101 corridor as the first initiative of 101 Corridor Connect.

Projects will include highway, active transportation, transit, other types of improvements.

What does Multimodal Mean?



Getting Beyond Just the Highway

Projects that will be considered for the program should improve **mobility, safety, economic development, sustainability** and **equity** for all users in the 101 corridor and can be inclusive of all modes of transportation



Multimodal Strategy Development

Step 1: Identify and Evaluate

Transportation projects on the freeway and within the one-mile buffer will be identified through existing planning documents and capital improvement programs and through discussions with agency staff.

Identified projects will be assessed for their potential to address congestion on US 101 and evaluated against criteria based on various factors including grant program guidelines, community feedback, and the TA's Strategic Plan.



Multimodal Strategy Development

Step 2: Prioritize and Deliver

Projects will be prioritized based on the results of the evaluation process to inform the final program of projects. Implementation strategies will be developed for each project to help ensure a coordinated approach to delivering projects.



Multimodal Strategy Components

- 1 Existing Conditions Report
- 2 Project Inventory
- 3 Community/Stakeholder Engagement
- 4 Prioritization and Implementation Plan

1 North County

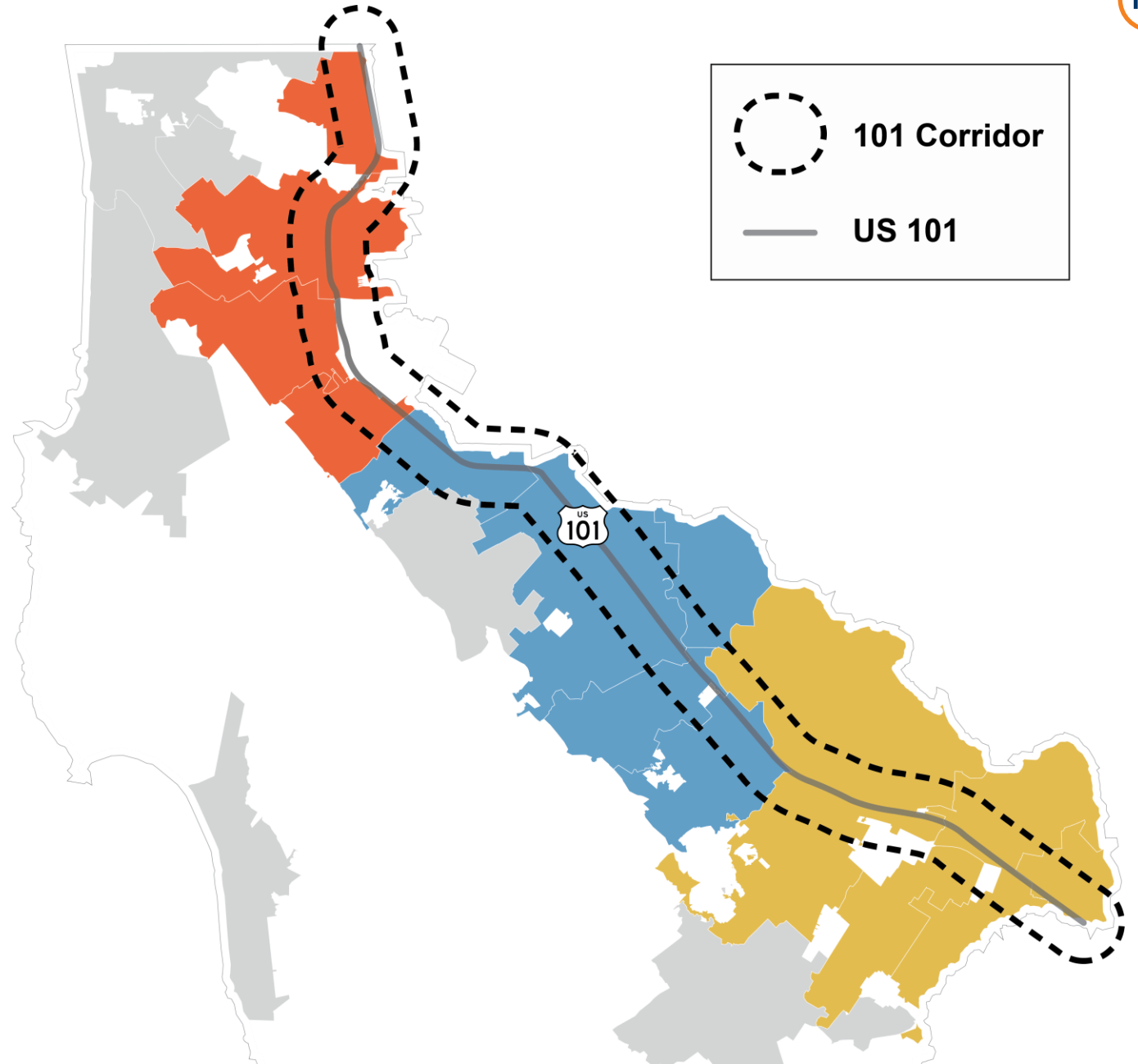
Brisbane, Millbrae, San Bruno,
South San Francisco
Now – Winter 2024

2 Mid County

Belmont, Burlingame, Foster
City, San Carlos, San Mateo
Begins Spring 2024

3 South County

Atherton, East Palo Alto,
Menlo Park, Redwood City
Begins in 2025



North County Multimodal Strategy



Project Study Area

North County Corridor

Includes the cities of Brisbane, Millbrae, San Bruno, and South San Francisco



North County Multimodal Strategy Timeline



Community/ Stakeholder Engagement

Components

- Webpage
- Survey
- Pop-Up Events
- CBO Partnerships
- Virtual Community Meeting
- Stakeholder Presentations
- Project Working Group Meetings
- Multilingual documents and interpretation

Public Feedback

**What would improve
your travel experience
along the 101
corridor?**

- Roadway improvements and connections
- Safety while biking, walking or rolling
- More or improved bicycle/scooter lanes
- Intersection/crosswalk improvements
- Improved access at transit stations or options for people with mobility challenges
- More frequent and reliable transit service
- Affordable travel options
- Electric vehicle infrastructure
- Repair existing infrastructure
- Improve lighting and landscaping

Take Our Survey

If you travel along
the U.S. 101
corridor, we want
your feedback



FILL OUT OUR ONLINE SURVEY



Tell us how we can improve
transportation along the
101 Corridor.

The [survey](https://www.surveyhero.com/c/101CC-North) is open until November 17, 2023
<https://www.surveyhero.com/c/101CC-North>

Q & A



Thank You

For any questions, please contact:

Martin Reyes

Principal Transportation Planner

ReyesM@samtrans.com

Amy C. Linehan

Government and Community Affairs Officer

LinehanA@samtrans.com

smcta.com/101CC

smcta.com/NorthCountyMultimodal



MOVING THE PENINSULA FORWARD